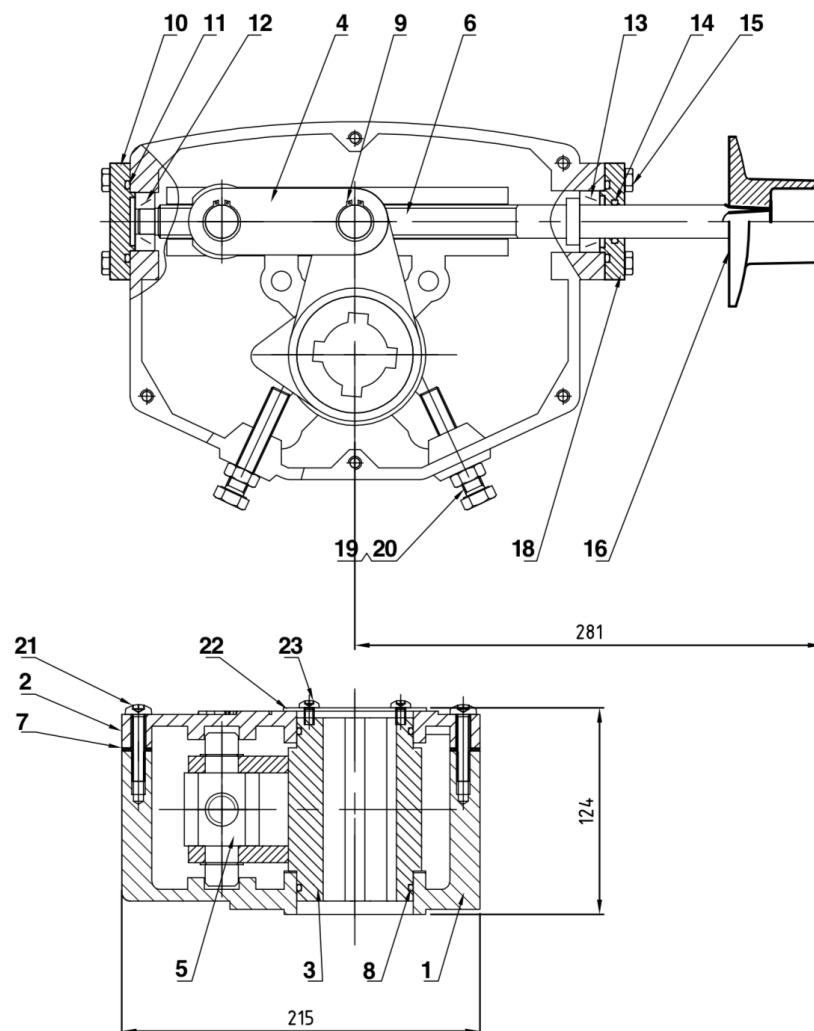


1040TNA Series Travel Nut Actuator for Mechanical Joint Butterfly Valve

MATERIAL SPECIFICATIONS

NO.	PART NAME	Qty	MATERIAL
1	BOX	1	DI, ASTM A536 65-45-12
2	COVER	1	DI, ASTM A536 65-45-12
3	ROCKER ARM	1	DI, ASTM A536 65-45-12
4	CONNECTING ROD	2	CARBON STEEL
5	MOVING NUT	1	BRONZE
6	SCREW STEM	1	STAINLESS STEEL, SS431
7	COVER GASKET	1	NON GRAPHITE GASKET
8	O-RING $\phi 3.55 \times 60$	2	NBR
9	RETAINING RING 20	4	CARBON STEEL
10	BOTTOM END COVER	1	CI, ASTM A126 CLASS B
11	O-RING $\phi 3.55 \times 40$	1	NBR
12	BEARING	1	STAINLESS STEEL
13	BEARING	1	STAINLESS STEEL
14	O-RING $\phi 3.55 \times 18$	1	NBR
15	BOLT M8 \times 30	8	CARBON STEEL, ZINC PLATED
16	OPERATING NUT	1	DI, ASTM A536 65-45-12
18	UPPER END COVER	1	CI, ASTM A126 CLASS B
19	BOLT M12 \times 70	2	CARBON STEEL, ZINC PLATED
20	NUT M12	2	CARBON STEEL, ZINC PLATED
21	CROSS HEAD SCREW M6 \times 40	6	CARBON STEEL, ZINC PLATED
22	INDICATOR	1	STAINLESS STEEL
23	CROSS HEAD SCREW M5 \times 10	2	CARBON STEEL, ZINC PLATED



1040TNA Series Travel Nut Actuator for Mechanical Joint Butterfly Valve

MATERIAL SPECIFICATIONS

NO.	PART NAME	Qty	MATERIAL
1	BOX	1	DI, ASTM A536 65-45-12
2	COVER	1	DI, ASTM A536 65-45-12
3	MOVING NUT	1	BRONZE
4	RETAINING RING 25	4	CARBON STEEL
5	TAIL COPPER SLEEVE	1	BRASS
6	TAIL WASHER	1	BRASS
7	CONNECTING ROD	2	CARBON STEEL
8	ROCKER ARM	1	DI, ASTM A536 65-45-12
9	SCREW STEM	1	STAINLESS STEEL, SS431
10	TOP COPPER SLEEVE	1	BRASS
11	TOP WASHER	1	BRASS
12	END COVER	1	CI, ASTM A126 CLASS B
14	OPERATING NUT	1	DI, ASTM A536 65-45-12
15	BOLT M12×30	2	CARBON STEEL, ZINC PLATED
16	NUT M12	2	CARBON STEEL, ZINC PLATED
17	O-RING $\varnothing 2.65 \times 63$	2	NBR
18	CROSS HEAD SCREW M6×14	5	CARBON STEEL, ZINC PLATED
19	COVER GASKET	1	NON GRAPHITE GASKET
20	O-RING $\varnothing 3.55 \times 42.5$	1	NBR
21	BOLT M8×25	4	CARBON STEEL, ZINC PLATED

